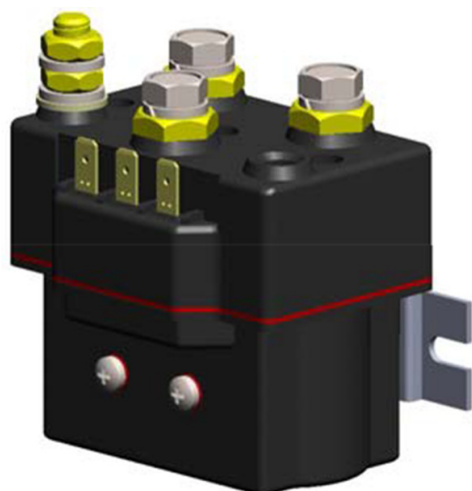


Switching Contactor - Large



PN 881355 12 V
PN 881356 24 V

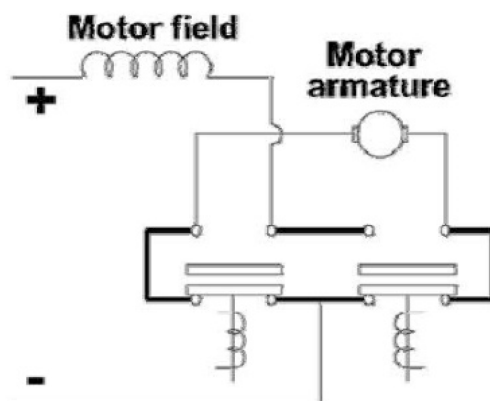
Features Include

- Sealed dual throw contactor is designed to control forward and reverse functions on high current motors such as those used in winches.
- 9.5 in3 / rev: constant and highly efficient operating torque motor with 15 000 lb capacity.
- Rated at IP66 per IEC60529, it will operate whilst submerged.
- Utilises silver alloy contact material for its ability to withstand heat and resist burning and welding.
- Compact and light-weight due to Mono-block construction.

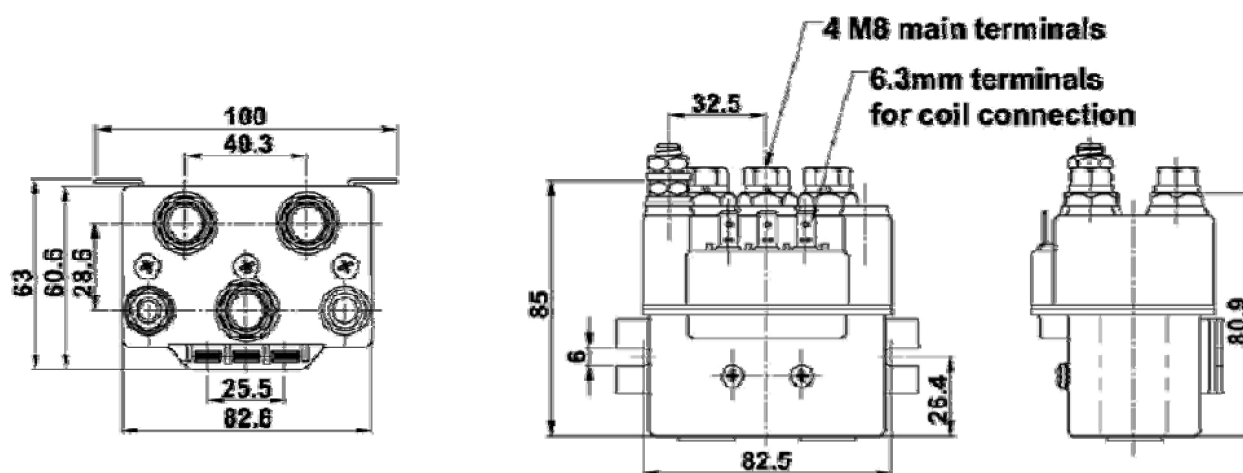
Specifications

- | | |
|---|--|
| • Thermal current rating: | 100% @ 100 Amps |
| • Intermittent current rating: | 5% duty @ 400 Amps
30% duty @ 180 Amps
50% duty @ 150 Amps |
| • Typical fault currents: | 400 amps at 48 vdc |
| • Typical voltage drop across contacts: | 40 mV per 100 amperes |
| • Mechanical life: | > 5 X 1000000 |
| • Maximum pull-in voltage (coil at 20°C): | Intermittently rated: 60% v
Continuously rated: 66% v |
| • Typical drop-out voltage:19:4:1 | 10 – 20% v |

Wiring Connections



Dimensions



Packaging

Net Weight: 1.05 kg
Box Dimensions: 108 x 120 x 70 mm

Warranty

One year warranty for electrical components from date of purchase.